

CREATIVE PARK

<http://www.canon.com/c-park/>



完成写真

韓国 華城

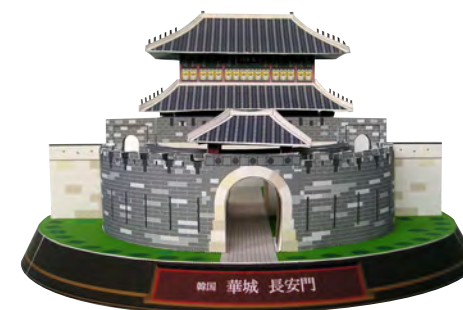
李朝22代国王・正祖が遷都を夢見て1796年に完成させた華城は、韓国の京畿道水原市にある。遷都は正祖の早すぎる死でまぼろしに終わったが、残されたこの城郭は韓国城郭建築の最高傑作と評された。高さ7メートルの壁が約5キロに渡って周囲を巡る城郭の築造には石材と煉瓦が併用されている。また、建築工程や資材の数量、労働者の氏名といった築城の完全な記録が残っているのは特筆すべき点で、1997年には世界文化遺産に登録された。このペーパークラフトは華城の北門『長安門』がモデルになっている。「長安」には“首都”の意が含まれていて、当時は王の通用門であり正門だった。

※このモデルはペーパークラフト用にデザインされており、実物とは異なる部分があります。

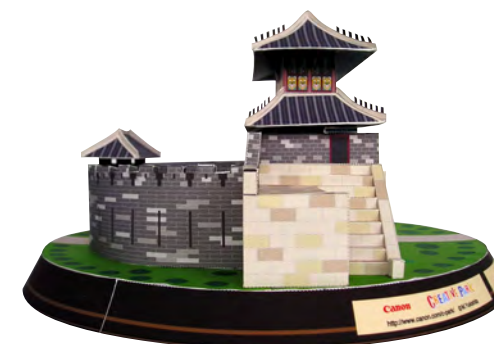
■ パーツシート【組立部品】：A4サイズ／15枚 (No.1～No.15)

■ パーツ数：110個

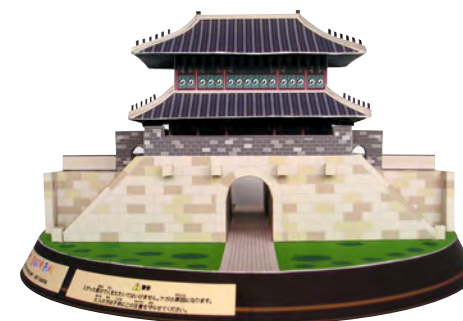
※パーツシートのページ順に【組立説明書】をよくお読みになって制作してください。



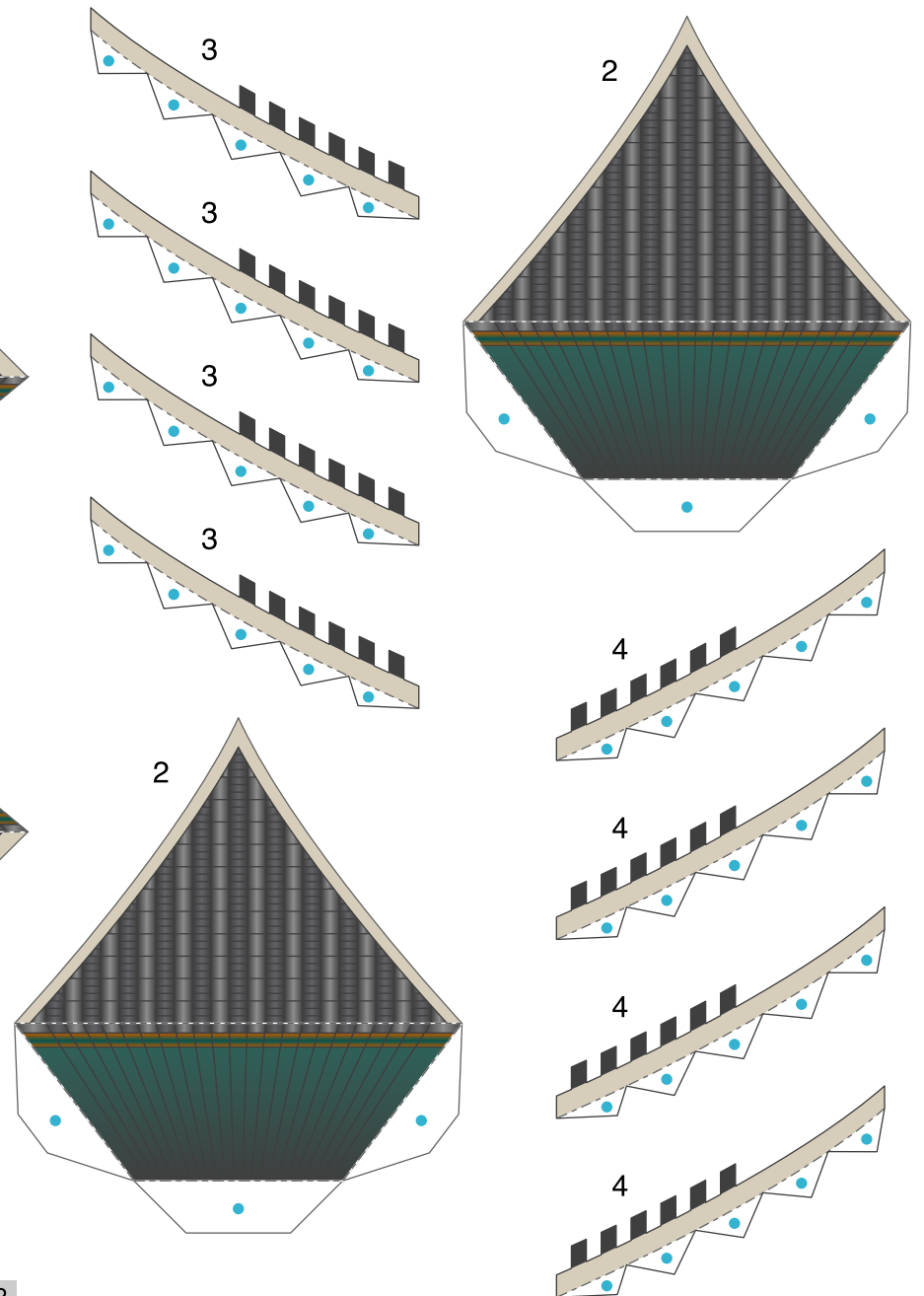
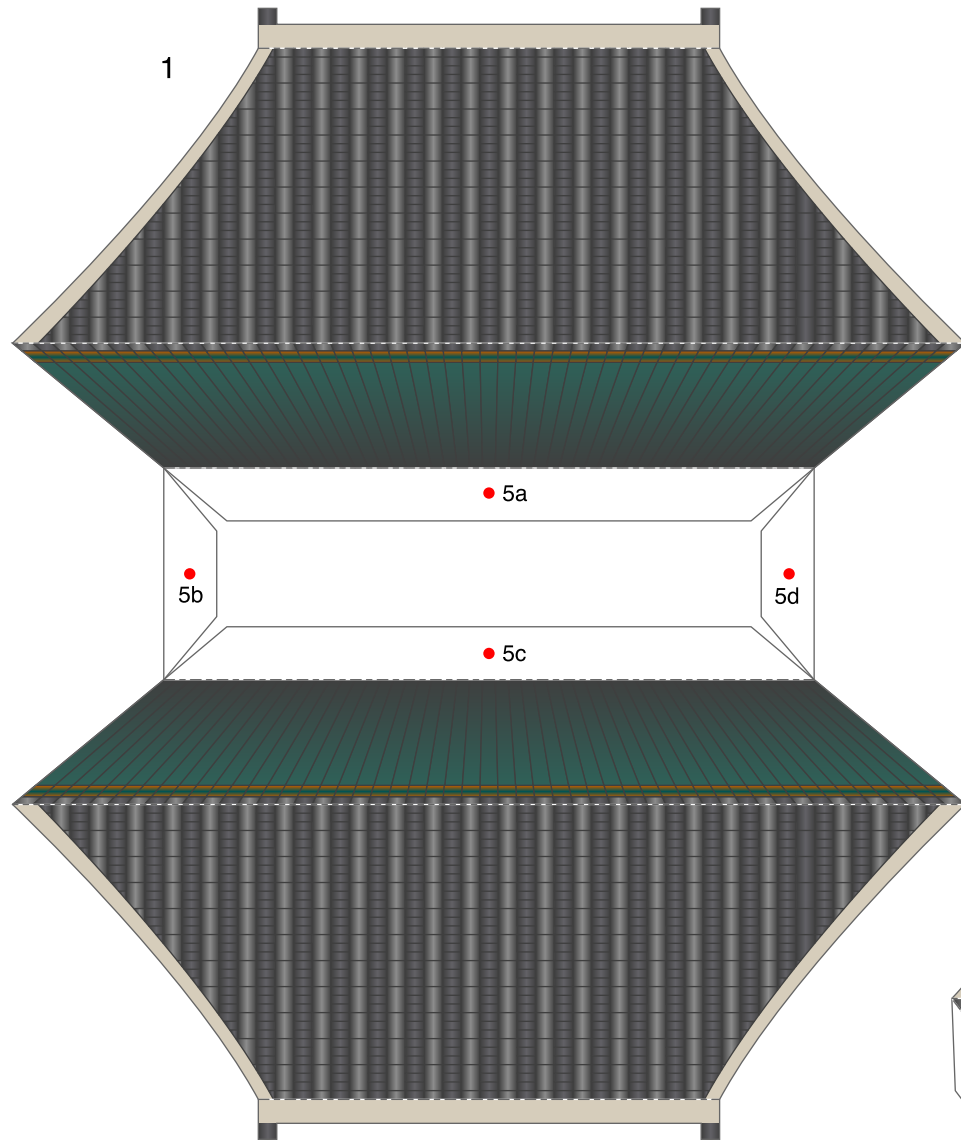
正面

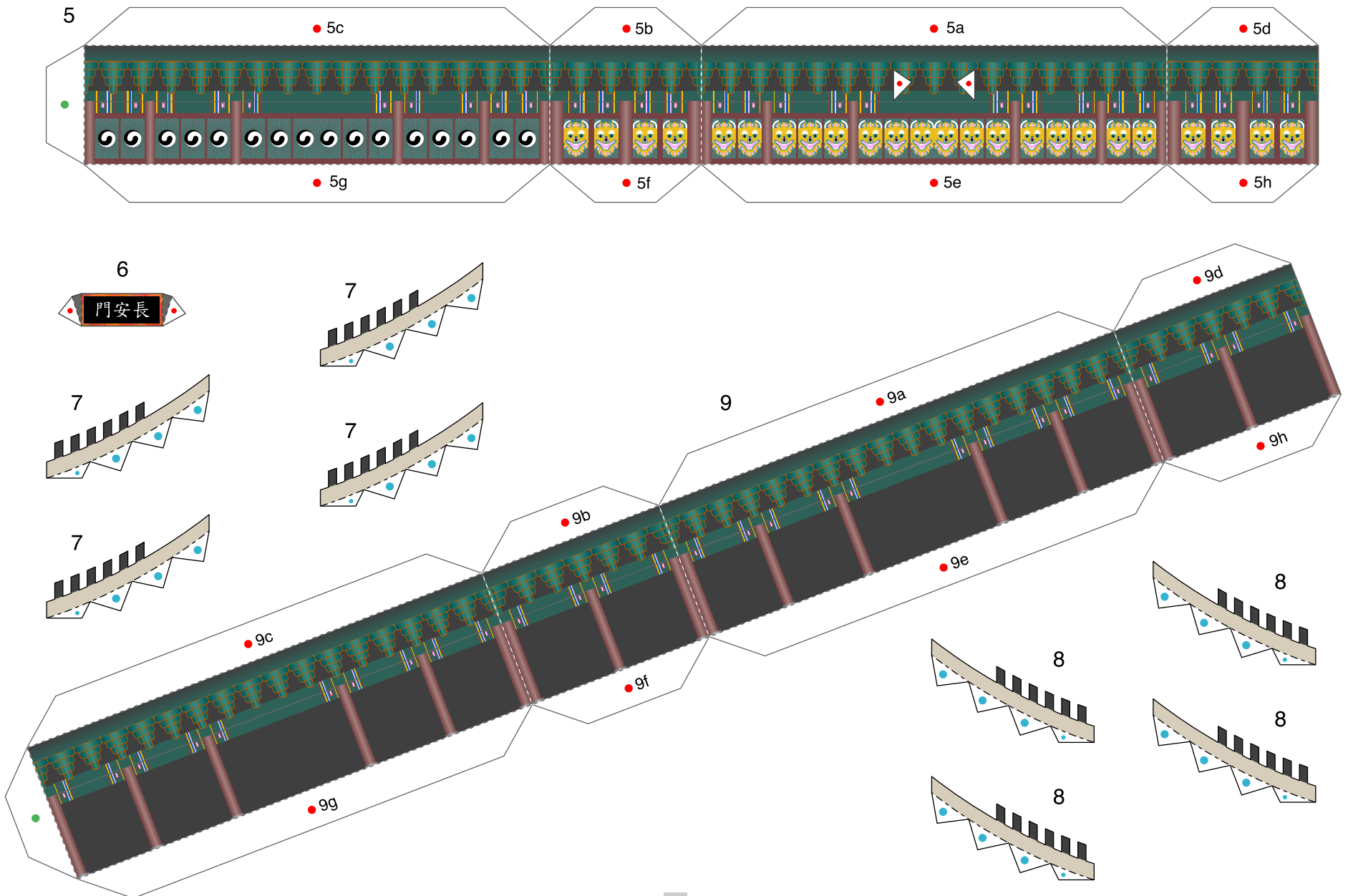


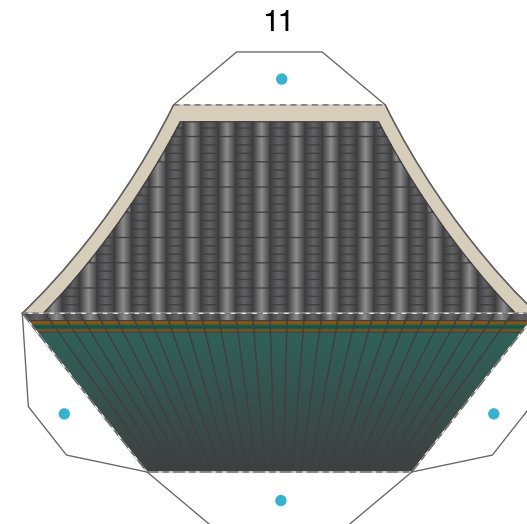
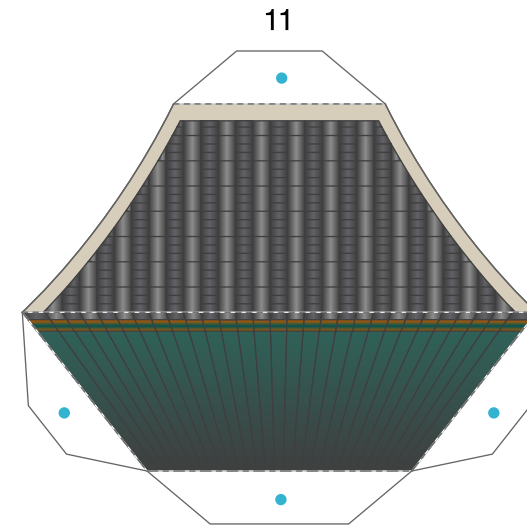
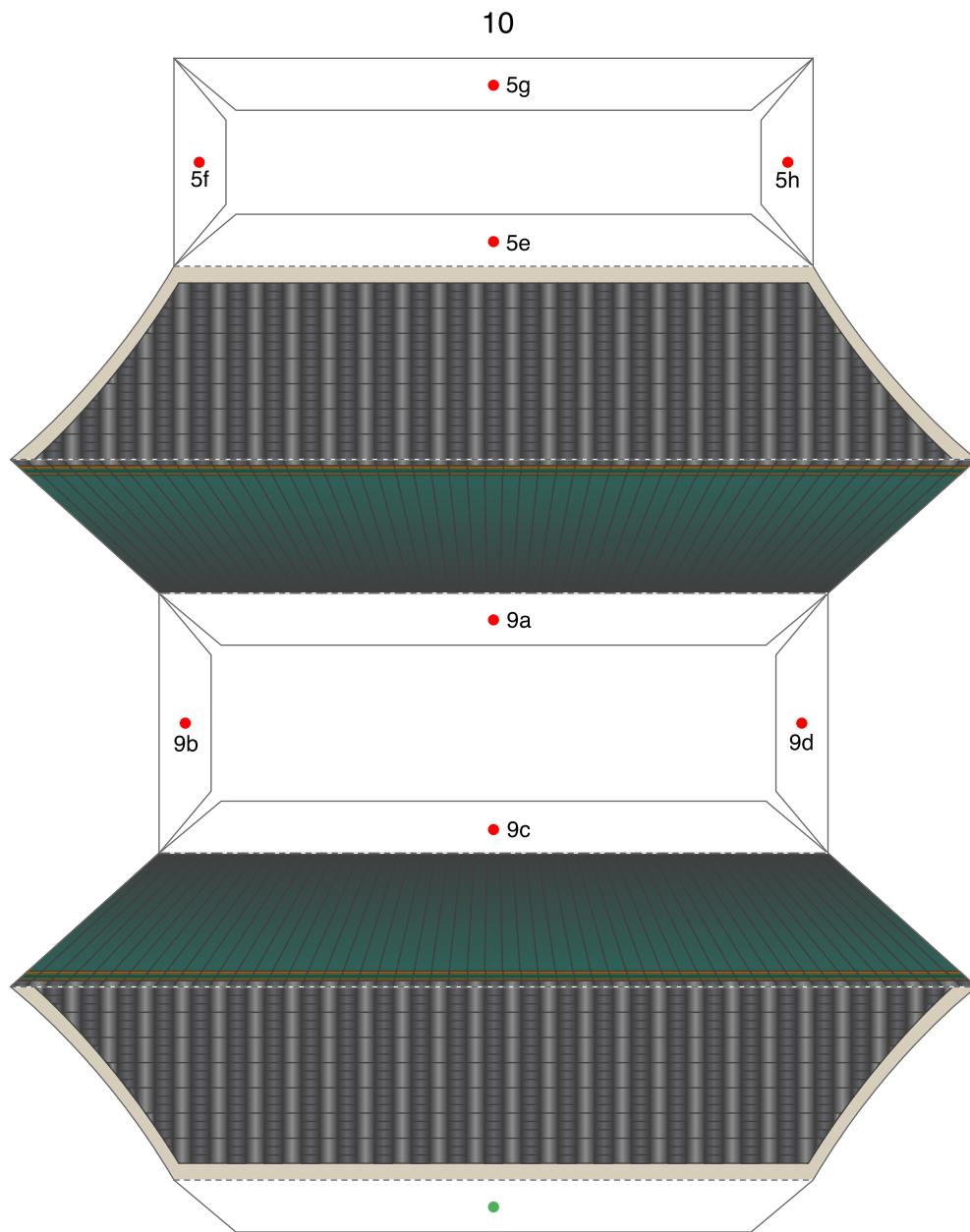
側面

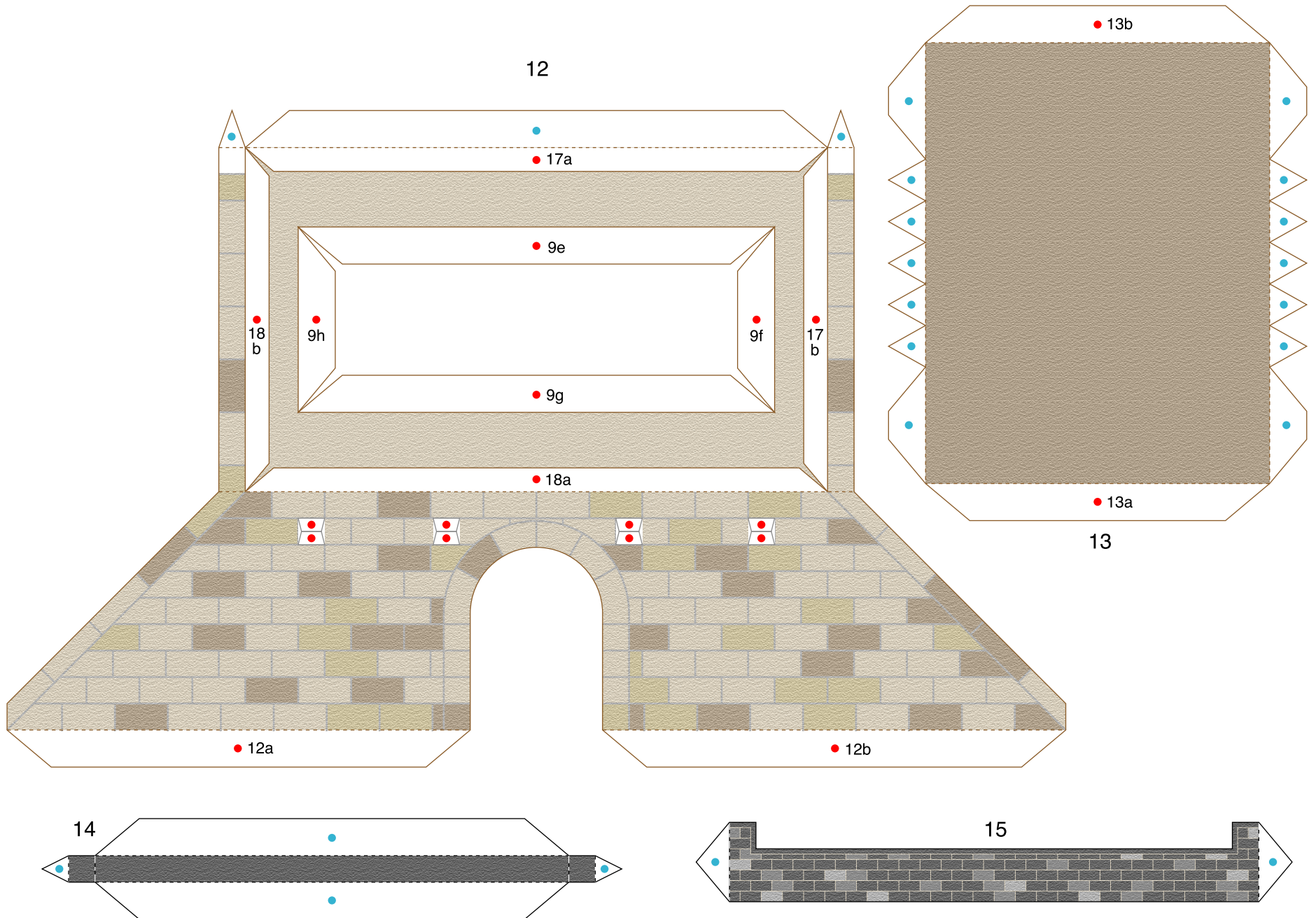


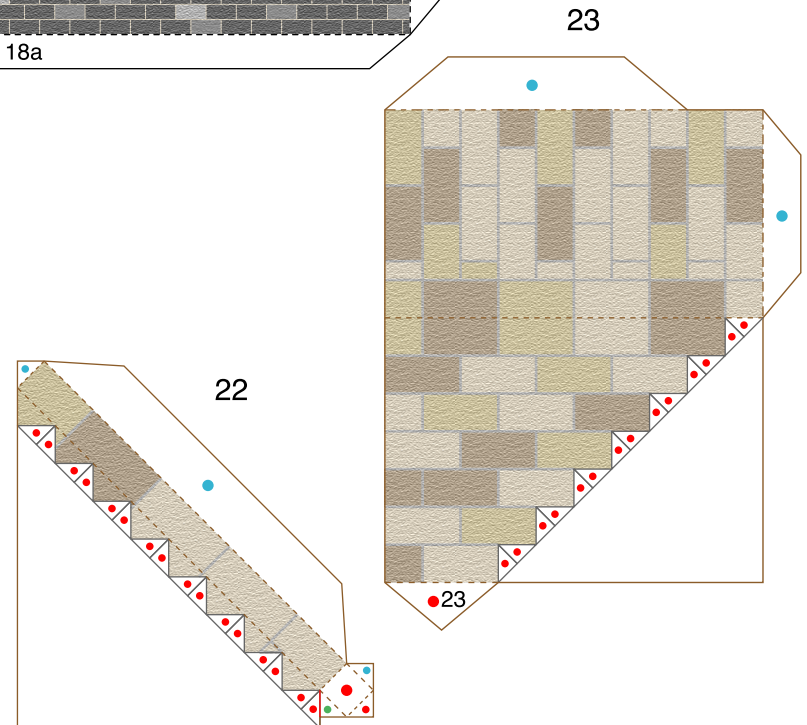
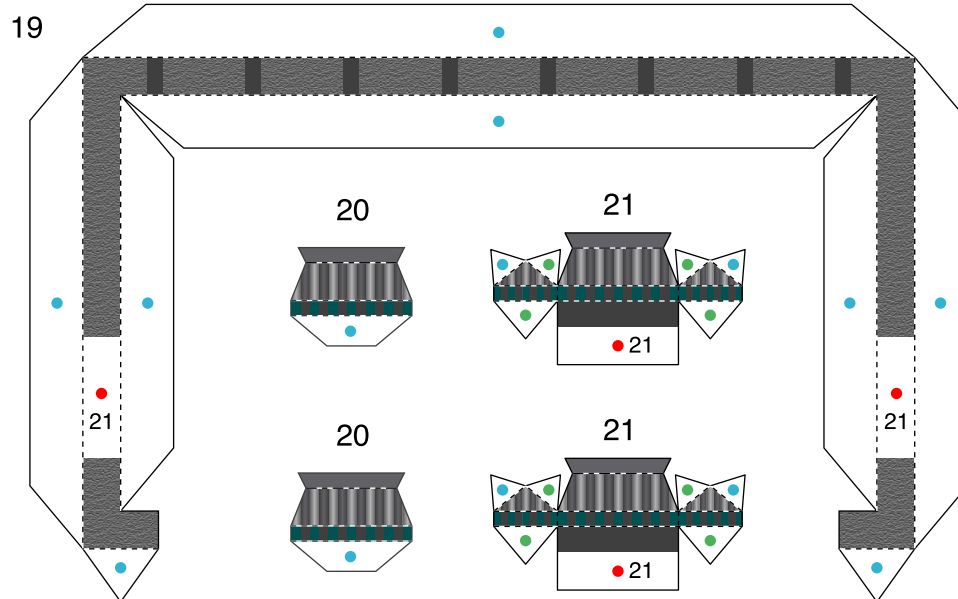
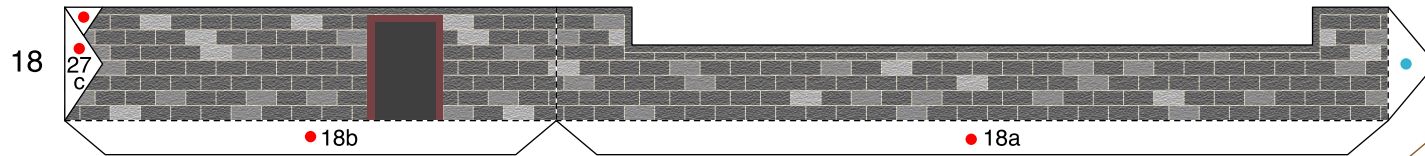
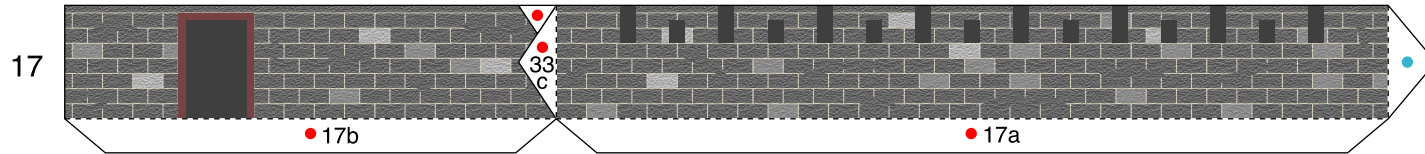
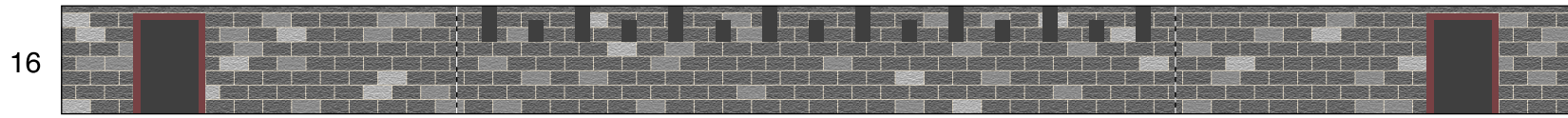
背面

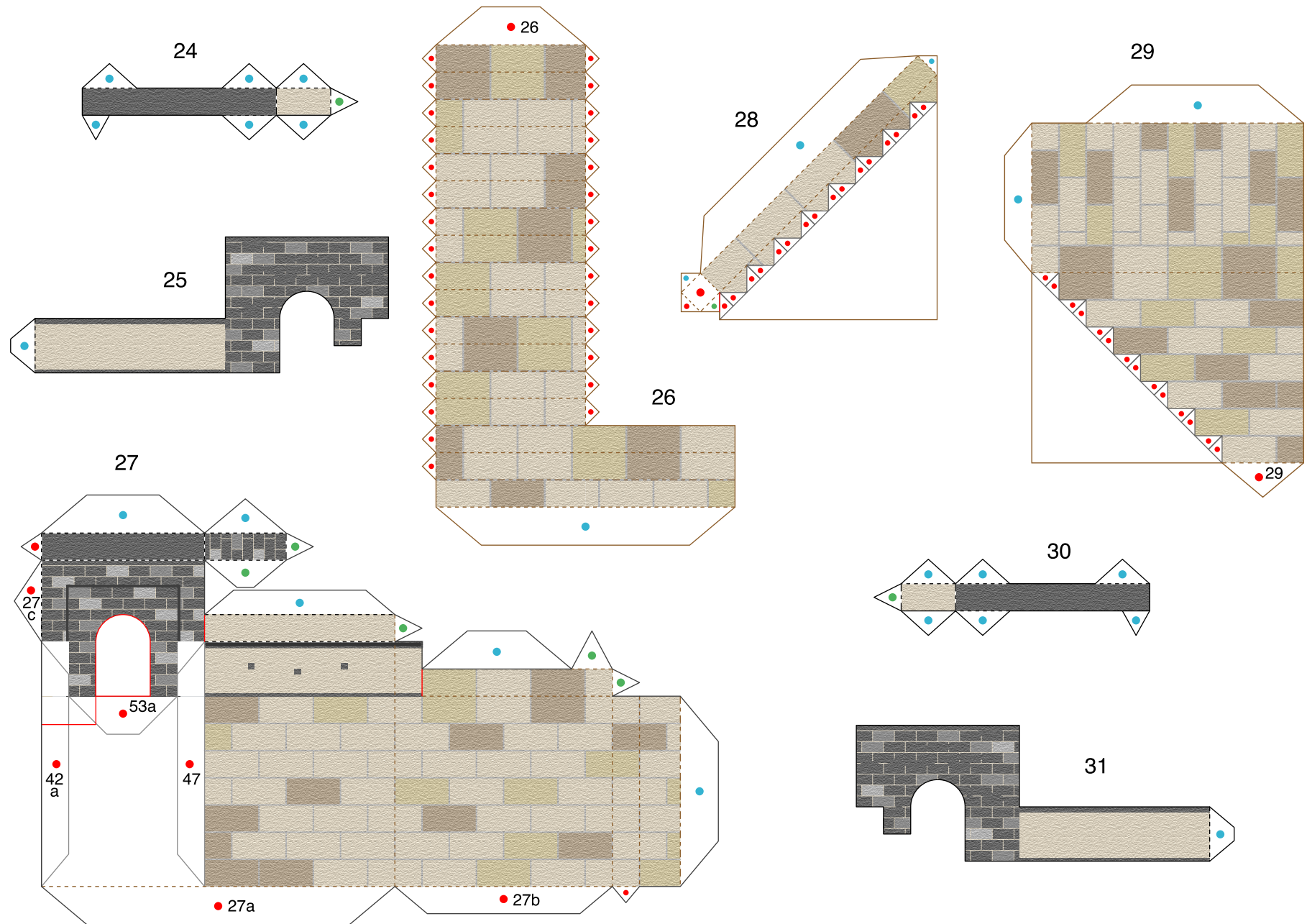


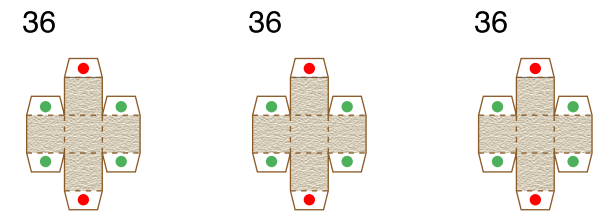
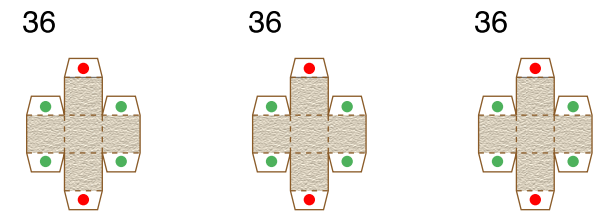
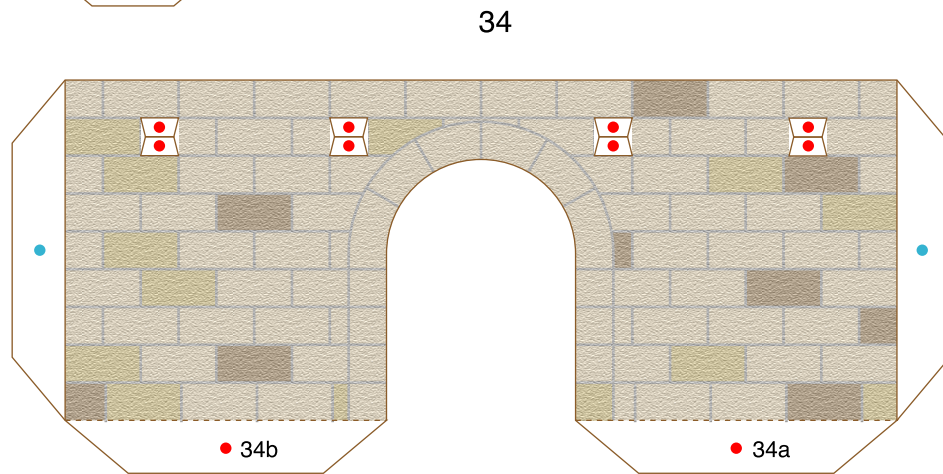
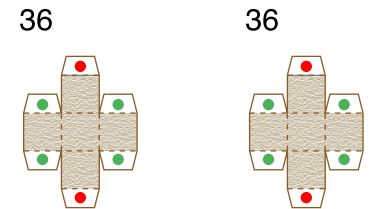
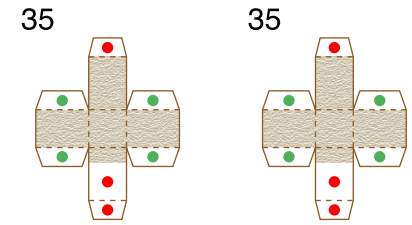
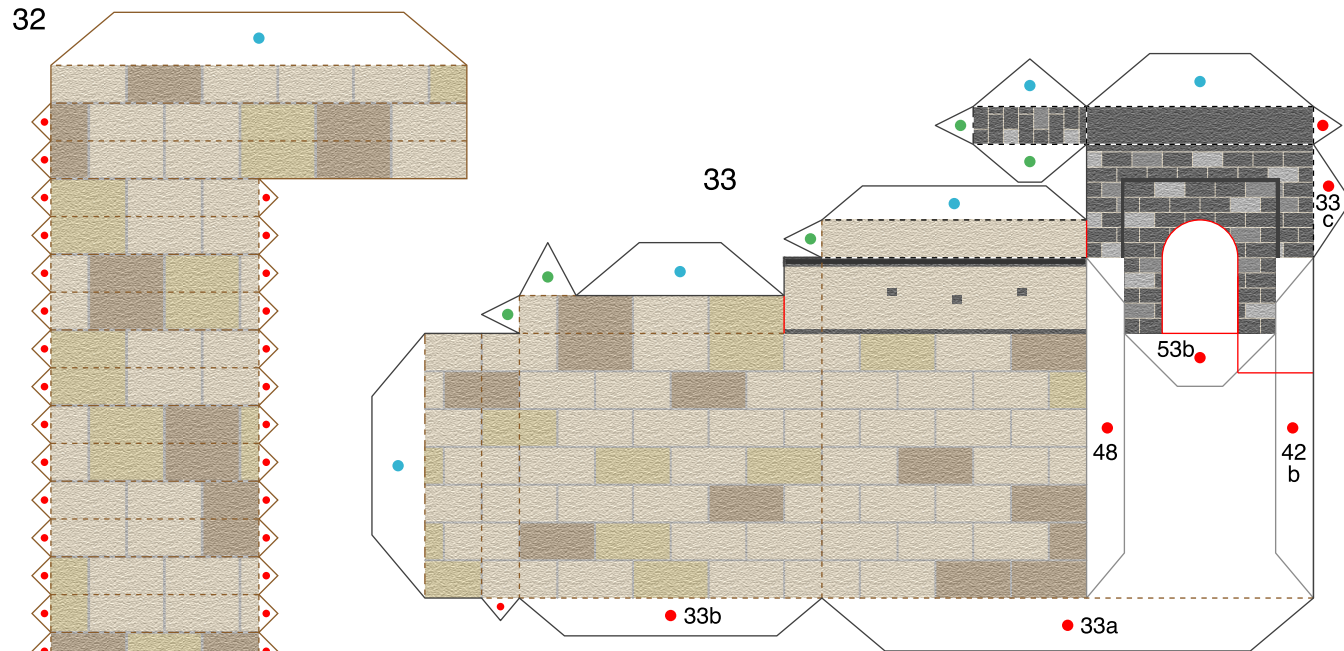


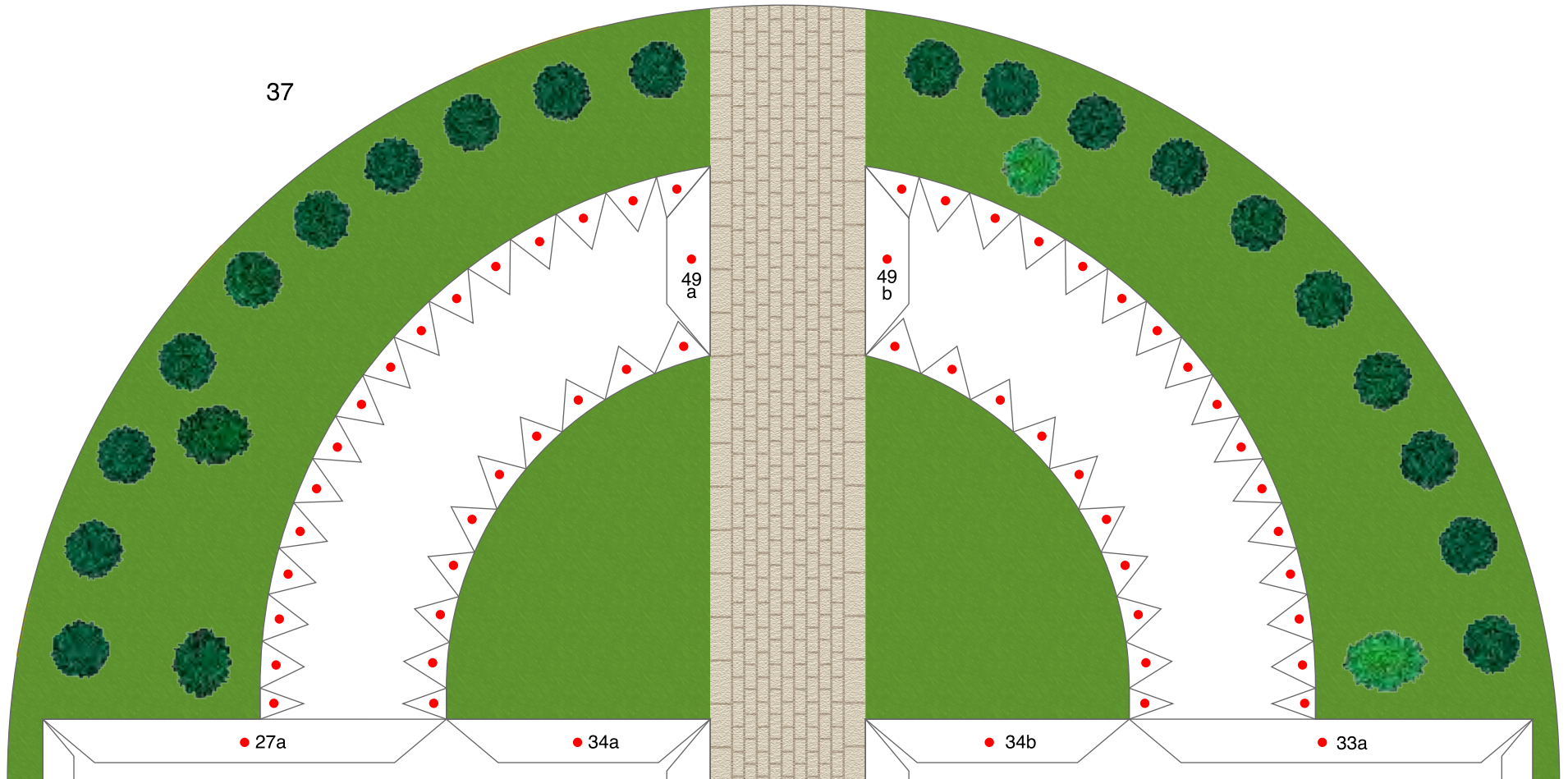




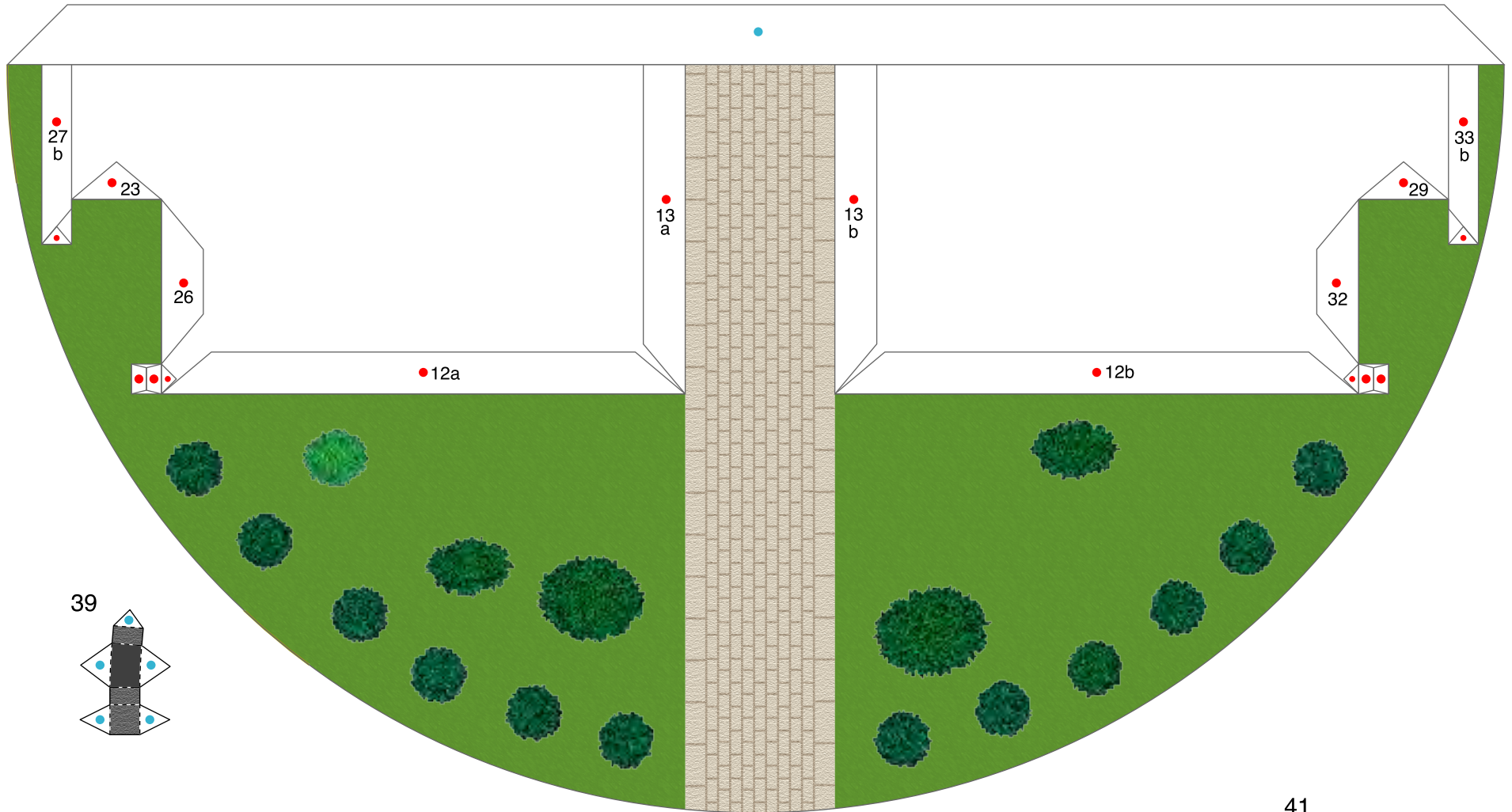




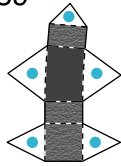




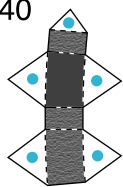
38



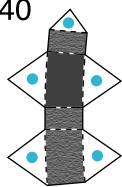
39



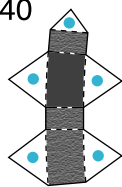
40



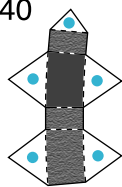
40



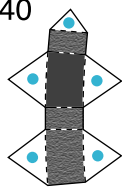
40



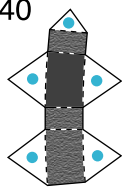
40



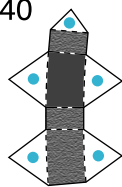
40



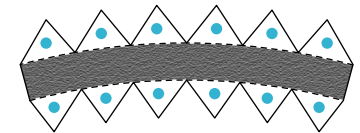
40



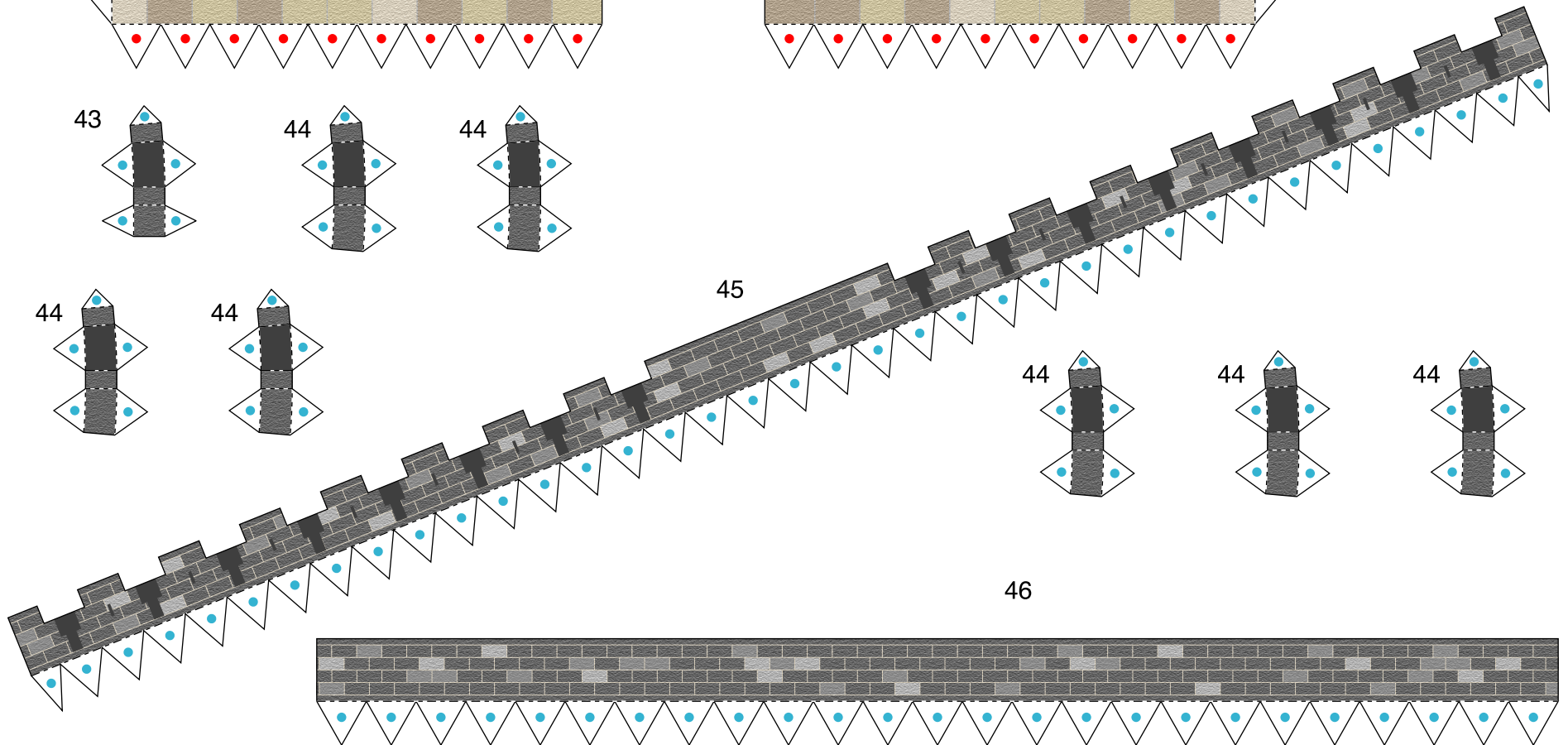
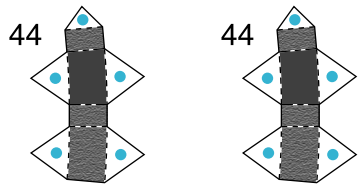
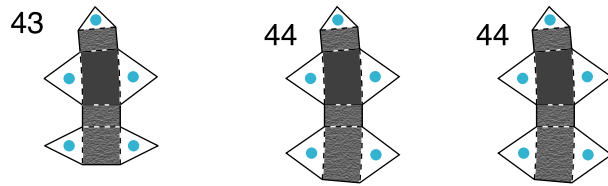
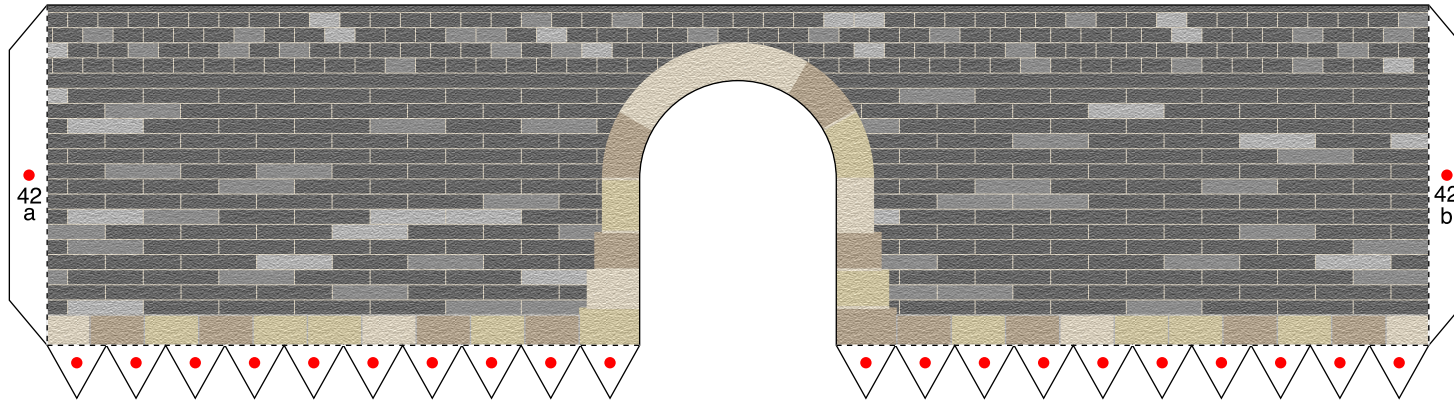
40

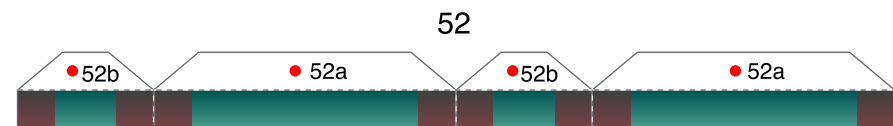
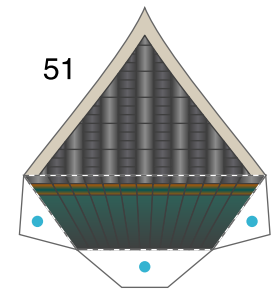
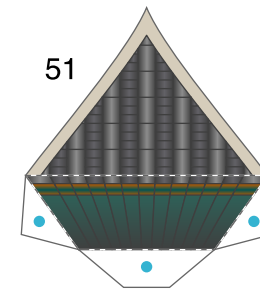
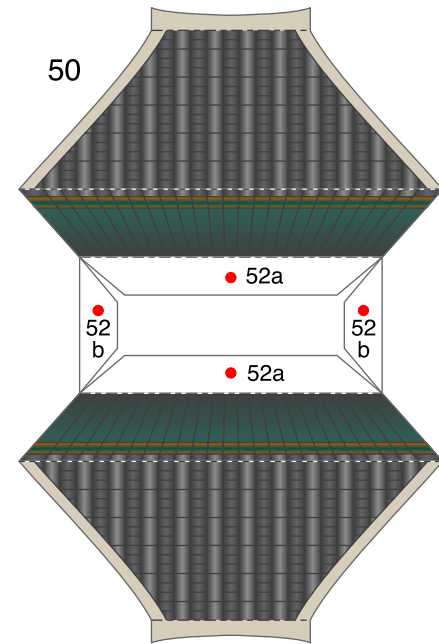
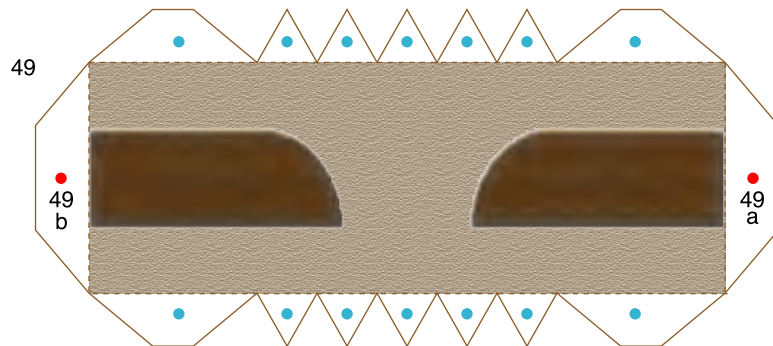
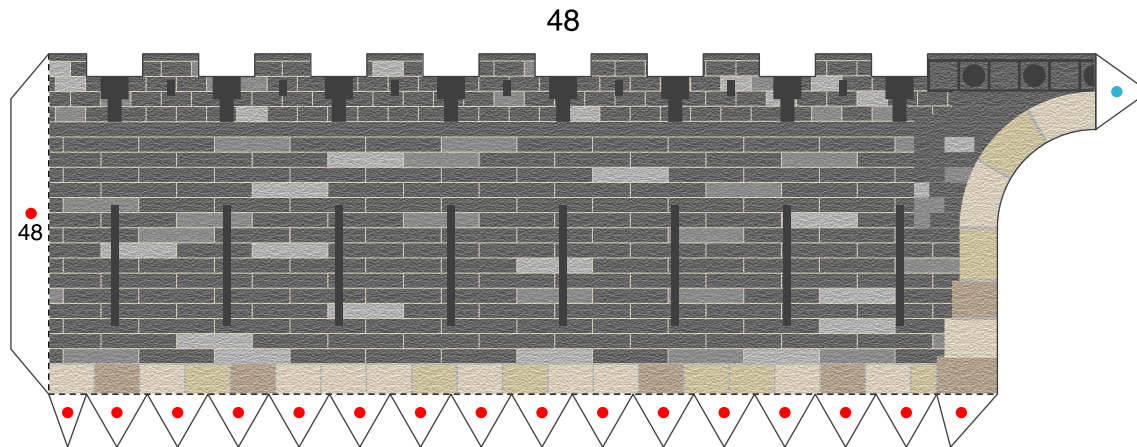
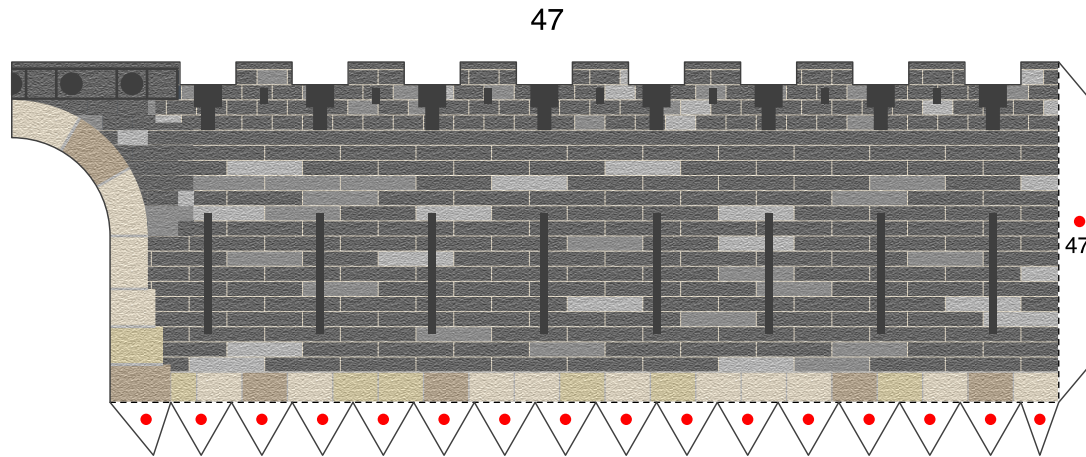


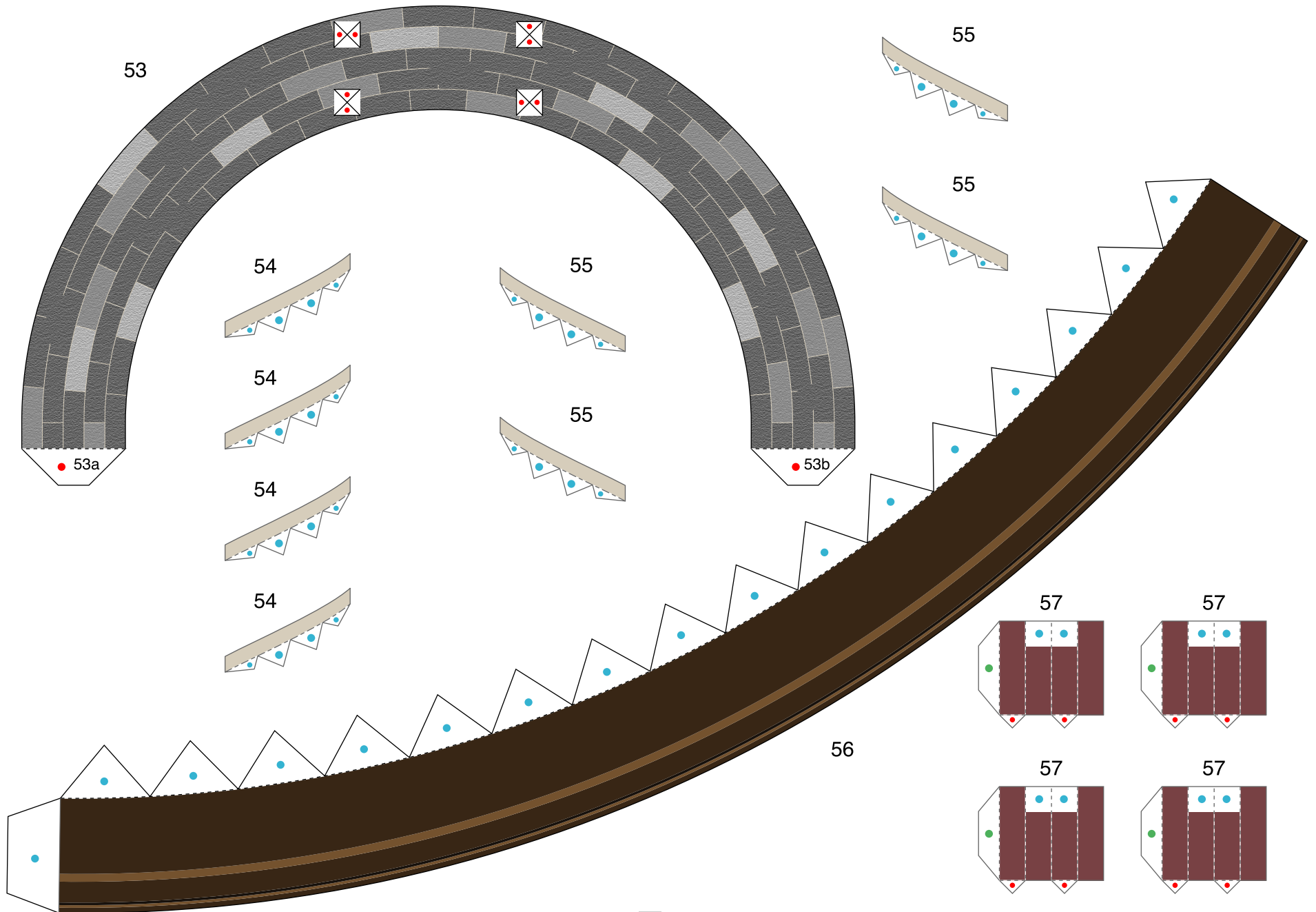
41

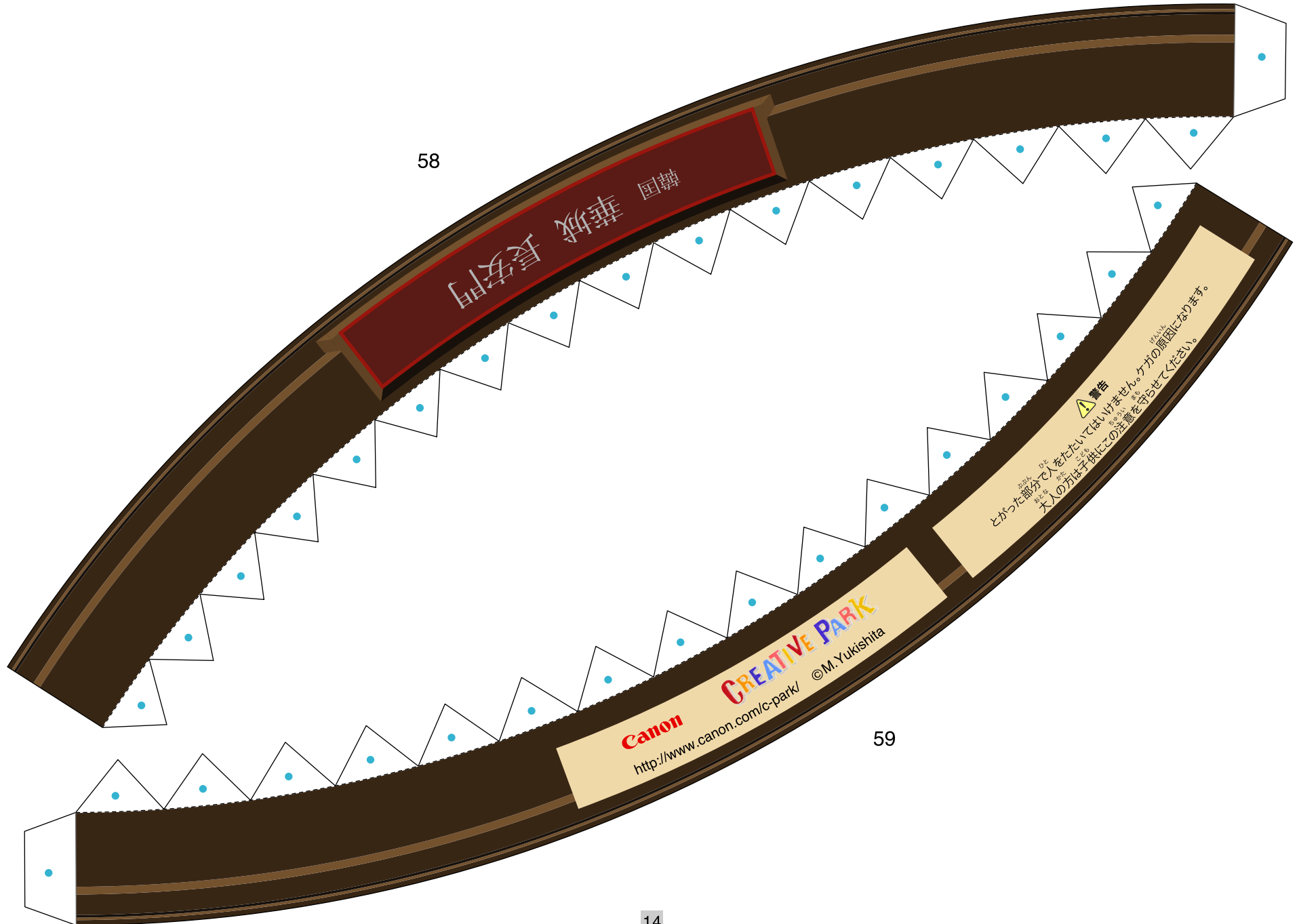


42









58

59

